

A modern interior space featuring large Milgard patio doors and windows. The doors are open, revealing a patio area with a wicker chair and a view of a lush green forest. The interior has a wooden floor and a ceiling with horizontal slats. A red banner in the top right corner displays the Milgard logo.

**MILGARD®**

# Patio Door Selection Made Easy

CREATE SEAMLESS TRANSITIONS

By MITER Brands™



## WHY WE'RE THE RIGHT CHOICE.

MILGARD offers beautiful, worry-free windows and patio doors to frame each of life's little moments. Our exacting manufacturing processes and the innovations we develop mean you get reliable windows and doors that perform year after year. With MILGARD, you'll receive a level of service and quality others simply can't match, backed with an industry-leading warranty.





**MILGARD®**

# Framing home in a new light

The path to perfect windows and doors has never been more clear. From tranquil mornings to family dinners, MILGARD seamlessly connects you to what matters most: windows and doors that frame life's most meaningful moments.

As a trusted brand for more than half a century, MILGARD offers products that promise long-lasting comfort, protection, and exceptional quality day after day, year after year.

---

**EXPERIENCE  
IS EVERYTHING**

---

Our experts match you with attractive, reliable windows and patio doors that best fit your home, your needs, and your price point.

---

**CONFIDENCE TO  
CREATE**

---

We deliver the highest quality windows and patio doors through our passion for craftsmanship and a relentless pursuit of 100%.

---

**EVERY DETAIL,  
EVERY DAY**

---

From robust testing and precision manufacturing processes to the innovations we develop for your comfort, every detail matters.

---

**FRONT COVER:** AX550 MOVING GLASS WALLS - BI-FOLD DOOR

# It's as easy as 1-2-3

Buying patio doors doesn't have to be complicated. This helpful guide offers tips and ideas to make it easy to choose the right custom made patio doors for your home.

## STEP 1 / **FUNCTION**

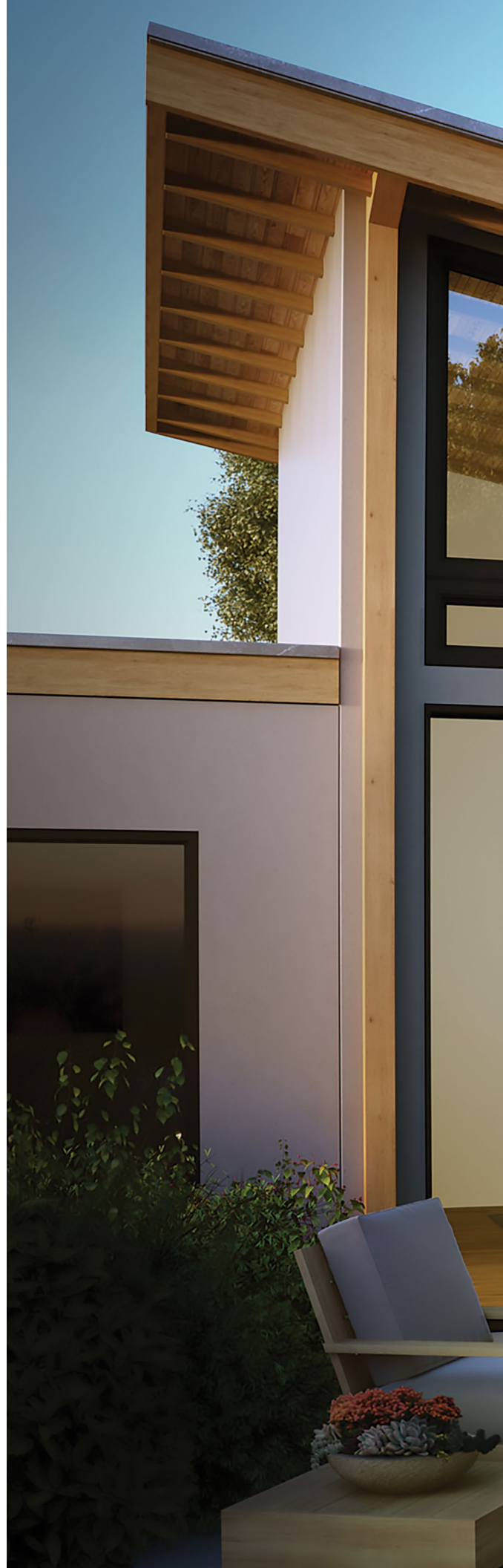
Operating Style and Size .....	6
Choosing the Location .....	11

## STEP 2 / **STYLE**

Frame Material .....	14
MILGARD Series .....	16
Colors .....	19
Hardware .....	19
Grids .....	19

## STEP 3 / **DETAILS**

Energy Efficiency .....	22
Security and Privacy .....	22
Warranty .....	23

















# The right function

Let's begin with looking at which room of your home needs a patio door. Is it located in your kitchen, dining area or living room? Will it lead to a backyard or second floor balcony? Each room may need a patio door that operates differently, depending on how you plan to use it.

## OPERATING STYLE AND SIZE

---

The operating style you select should suit the room itself, not only for aesthetics, but, also for general usability. When we talk about an operating style, we are referring to the way in which the patio door opens, plus, daylight and ventilation considerations.









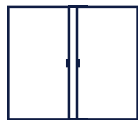
## DOOR OPTIONS

### STANDARD PATIO DOORS



#### Sliding

Sliding patio doors are ideal when you have a pre-existing door opening or limited floor plan space. Sliding along a horizontal track, choose either right-hand or left-hand operation in custom-sized 2, 3, or 4 panel configurations.



#### Swinging

Stylish swinging patio doors elevate the look of your home while letting in bountiful light. Choose from in-swing or out-swing operating styles, taking into consideration:

- **Where do you want to see the hinges?** They are inside the home for in-swing and on the exterior for out-swing.
- **How much space do you have?** With an in-swing door, you need clearance for the door to open without hitting furniture. For out-swing, you need a clear path exiting the home.

V400 Tuscany® Series swinging doors available in AZ, CA, and NV only.



#### Sidelites

Looking for more ventilation or light? Consider sidelites. Available in fixed or operable configurations.

### AX550 MOVING GLASS WALLS

Beautiful AX550 Moving Glass Walls operate effortlessly with just the push of a finger. Sealed, stainless steel, ball bearing rollers help them glide smoothly. Choose from 3 options:



#### Bi-Fold Doors

Each panel folds on top of the adjacent panel as it opens (an accordion fold). This creates a huge patio door opening that really lets the outside in.



Fixed

#### Stacking Doors

Each panel stacks on top of each other as it slides down the track. When fully open, your living room extends into your patio space, filling your home with natural light and fresh air.



Pocket

#### Pocket Doors

The panels of your patio doors disappear from view when the door is open. As the panels slide open, they tuck into a wall pocket out of sight creating an open-air retreat.











## CHOOSING THE LOCATION

---

Knowing that the patio door you select for your home may differ depending on the room, here are a few things to keep in mind:



### What's the available space?

If you are selecting a patio door for replacement in an existing home, take note of the available space near the door. If it is limited, you may only want to look at **sliding patio doors**.



### Will there be furniture nearby?

Think about what furniture may be nearby that can allow room for the opening and closing of an **in-swing door**. The same holds true for your patio furniture and **out-swing doors**.



### How will the space flow?

If you are beginning new home construction, think about the flow of the entire home regarding entries and exit doors. Leave ample space on the exterior or interior if you like the look of **swing doors**.



### Are structural changes needed?

When remodeling a room, keep your budget in mind before falling in-love with a particular style. You may need additional structural support to carry the weight of a **moving glass wall** that hangs from the top.









AVERAGE CUSTOMER RATING



# The right style

Ready to frame your home in a whole new light?  
Your patio door impacts the way your home looks and functions.

## FRAME MATERIAL

---

A well-crafted frame can make all the difference in your patio door performance. In addition to the look of the frame itself, think about what material is best suited for the climate in your region.



### Fiberglass

Fiberglass is an innovative option that resists swelling, rotting and warping. They are exceptionally strong, low-maintenance and ideal for any style of home or climate. This is a beautiful option that is durable and built to last.



### Vinyl

Vinyl frames are known for being energy efficient due to the many air chambers built into the frame and panel. In addition to their insulating properties, vinyl frames are UV resistant, require little maintenance and are generally more affordable than other frame materials. This is a very common and popular material that works well in most climates.



### Aluminum

Aluminum is a recognized and established frame material that residential architects and builders love. Light yet strong, aluminum patio doors can be configured into a wide variety of combinations. They are low maintenance and best for non-corrosive environments.







## MILGARD Series

---

MILGARD patio doors stand up while standing out in three key ways:

- 1 Engineering, known for industry-leading designs using patented technologies.
- 2 In-house fiberglass frame production, as well as our unique vinyl formula, produces materials that won't absorb moisture.
- 3 Insulated glass, delivering superior energy efficiency.

### AX550 Moving Glass Walls

Beautiful, room-defining designs with effortless operation.

### C650 Ultra™ Series

A strong, beautiful and durable fiberglass door that is built to last.

(Only available in select markets.)

### V450 Homemaker Series

Features a welded, multi-chamber frame and panel for superior strength and energy-efficiency.

(Only available in select markets.)

### V400 Tuscany® Series

Our top of the line vinyl window with premium features, elegant style and exceptional performance.

### V300 Trinsic™ Series

Our newest addition to the vinyl line, with a sleek contemporary look for maximum viewing area.

(Only available in select markets.)

### A250 Thermally Improved Aluminum

Featuring a thin, durable frame equipped with a thermal barrier that improves energy efficiency.

(Only available in select markets.)







Explore our  
entire patio door  
offering online





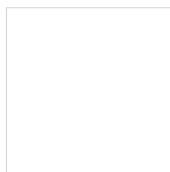




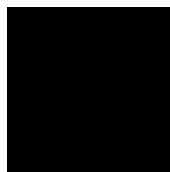
## COLORS

We have a wide variety of interior and exterior colors available, depending on the frame material you choose. Classic neutrals, like white and tan, as well as trending colors like black, can be specified depending on the series you choose.

The options shown here are from our vinyl lines. To see our entire selection of colors for vinyl, fiberglass, and aluminum doors please visit [milgard.com](http://milgard.com).



White



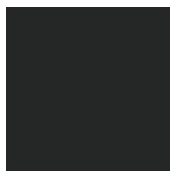
Black



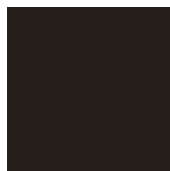
Tan



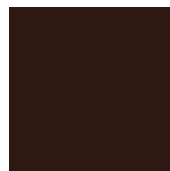
Adobe  
(Portland only)



Bronze



Espresso



Classic Brown



Silver

## HARDWARE

You can also choose different hardware colors, depending on the patio door series selected. For example, Brushed Chrome adds a nice touch to our V400 Tuscany® Series patio doors.

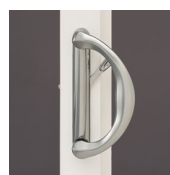
Operating your patio door should be easy to do for everyone in the home. Innovations like SmartTouch® handles help you open your door and close and lock it one smooth, single motion.



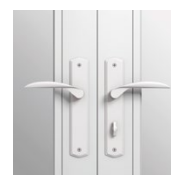
White



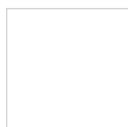
Black



Tan



Adobe  
(Portland only)



Silver



Brushed  
Chrome



Satin Nickel



Oil Rubbed  
Bronze

## GRIDS

Patio door grids are a distinctive way to liven up the look of your home, whether you're admiring it from the inside or out. Plus, grids can make a door match a historical period or architectural style. They can also turn a large open pane into something extraordinary.



Flat Grids  
Between the Glass



Sculptured Grids  
Between the Glass



Simulated  
Divided Lites









SINCE

1958



# The right details

Now it's time to think about the details that can bring immediate and long-term benefits to your new patio doors. Here are a few things to look at for added beauty, comfort, and peace of mind.

## ENERGY EFFICIENCY

---

According to the U.S. Department of Energy, leaky and inefficient windows and doors account for up to 25 percent of the average household's energy bills. Some sources estimate it being as high as 40 percent.

For the utmost in comfort and energy efficiency, MILGARD customizes our patio doors and their components to your climate. From the low-e glass coating to the frame design, we engineer the perfect doors for where you live. Look for windows that are ENERGY STAR® qualified.

## SECURITY AND PRIVACY

---

The SecurityMax™ Package is our most advanced security and locking system, exclusively for V400 Tuscany® Series sliding patio doors. It includes a multi-point locking system with the innovative SmartTouch® Bolt, a fully integrated, easy-to-use steel bolt that secures your door firmly into the top frame with the flip of a lever. The lock is activated with a single motion of the SmartTouch® door handle, engaging four locking points and securing the door in the top frame, bottom track and at the handle. SmartTouch® Bolt can also let the fresh air in while keeping the door secure in a vented position.





## WARRANTY

With the dedication to quality that we put into building the most reliable patio doors in the business, it wouldn't make sense to back them with anything less than a warranty you can count on. MILGARD offers industry-leading warranties depending on the series you choose. You can rest assured in your patio door selection and enjoy a comfortable home today.

Learn more and see complete details at [milgard.com/warranty](https://www.milgard.com/warranty)





## PATIO DOOR SELECTION GUIDE

**MILGARD**  
WINDOWS and DOORS

Success means getting it right  
in every detail, every time.  
Build boldly with MILGARD.

[milgard.com](https://milgard.com)

By **MITER Brands™**

A family of leading window and door  
brands, united by our passion for  
quality and relentless pursuit of 100%.

[miterbrands.com](https://miterbrands.com)

Ultra™, Trinsic™ and SecurityMax™ are trademarks of MILGARD Manufacturing, LLC. Tuscany™, and SmartTouch® are registered trademarks of MILGARD Manufacturing, LLC. MITER Brands™ is a trademark of MI Windows and Doors, LLC. ENERGY STAR® is a registered trademark of the U.S. Environmental Protection Agency. © 2024 MILGARD Windows and Doors, LLC. All rights reserved.

MG-DSG-0524