

Constant Force Balancer - Panel Removal & Installation

Materials Required

Safety Gloves
Safety Glasses



WARNING:

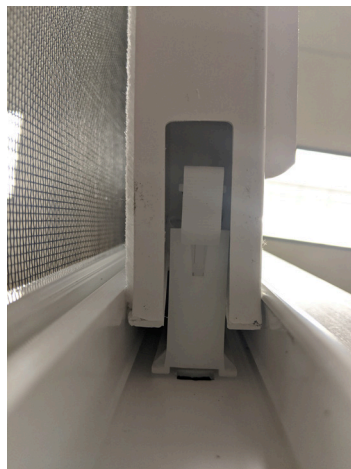
Energy is stored in coil springs and, if released, can result in personal injury. Follow these instructions carefully to avoid releasing the stored energy.

Panel Removal Instructions

1. Open the panel and locate the take-out feature and carriers on both sides of the frame.



2. Lower the panel so that the carriers are aligned with the takeout features.



Safety Precautions

This activity is appropriate for individuals with an understanding of how to use simple hand tools.

Remember to wear eye protection and to make sure that pets and small children are not present when performing these activities.

For questions, please contact us:

1.800.MILGARD

milgard.com

- Press the locking tab of both carriers completely until they are locked into the frame. There are two steps to locking: First, the lock slides into the take-out feature, and then the safety lock prevents the carrier from coming out.



- Locate the sash cam on right side of the sash near the top. Observe the tab at the top of the sash cam.



- Pull the sash cam toward yourself and hold in this position.



- While the sash cam is depressed, lift on the bottom left side of the sash. If done correctly, the panel should be pressed into the hand depressing the sash cam.



- Remove hand depressing the sash cam and allow the panel to rotate further, ensuring the cam is not released. Until the panel is removed, the sash needs to be pressed onto the right side of the frame.



- Lift the sash so that the bottom rail is higher than the carriers.



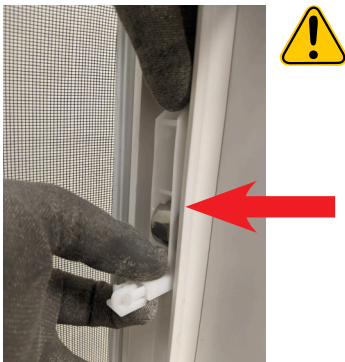
9. Pull the left side of the panel towards the user. The sash cam will bend, and the panel will come out.



10. Pull the panel to the left, thus releasing it completely from the frame.



11. To remove the carriers, carefully support the carrier while slightly pushing the carrier down and sliding the locking tab out. Keep the carrier against the frame at all times while the springs are extended.



12. Carefully raise the carrier until the springs are fully retracted.



13. Pull the carrier out over the springs. The springs may need to be pushed to remove them from the carrier.



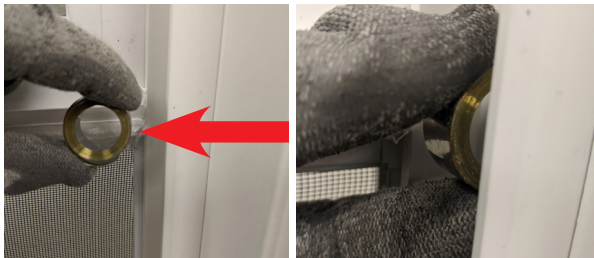
14. Unhook each spring from the window frame. A counter-clockwise torque applied to the coil can be beneficial for removal.



15. Repeat these steps on the opposite side.

Panel Installation Instructions

1. Install coils into the frame with the tail end going upward ensuring each balancer is fully seated into slot. The barbed end should be completely inside of the frame.



2. Install the carrier over the coils, always using the lowest available slot. This slot should never be empty.



3. Using both hands, lower the carrier so that the locking tab is aligned with the take-out feature. Keep the carrier against the frame at all times while the springs are extended.



4. Carefully extend the locking tab into the frame. There are two steps to the locking process. First the lock sliding into the take-out feature and second a safety lock that prevents the carrier from coming out.

5. Carefully release the carrier while constantly checking to ensure the locking tab was inserted properly.
6. Repeat this process for the opposite side.
7. Take the panel and install the left side into the left frame pocket while keeping the right side about 6" away from the frame.



8. Put pressure on the left sash cam by pushing the panel into the left jamb. Without releasing the leftward force, swing right side of the panel toward the frame. If done correctly, the left sash cam will bend and allow the panel to clear the right side of the frame. The right sash cam should snap in with an audible click.



9. Once centered, carefully lower the panel over the locked carriers so as not to disengage them.
10. Apply slight downward force to panel and disengage both carriers.
11. Close window.