

MILGARD®

V300/V250 Fastener Schedule

Appendix:

Page 1: Vertical Sliders

Page 2: Horizontal Sliders

Page 3: Slider Picture Windows

Page 4: IMR Combinations with Sliders

Page 5: Casements

Page 6: Awnings

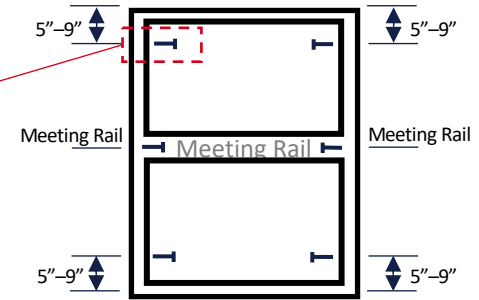
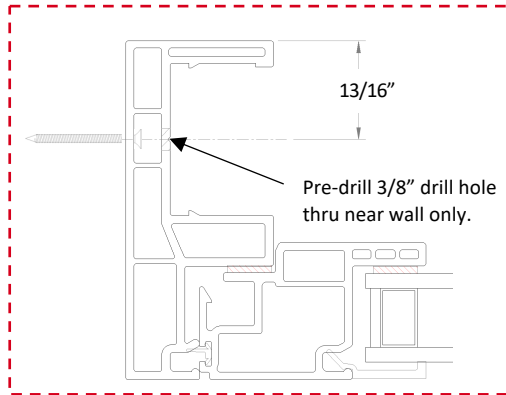
Page 7: Fixed Casements & Awnings

Page 8: IMR Combinations with Casements & Awnings

Page 9: Sliding Glass Doors

V300/V250 Vertical Sliders

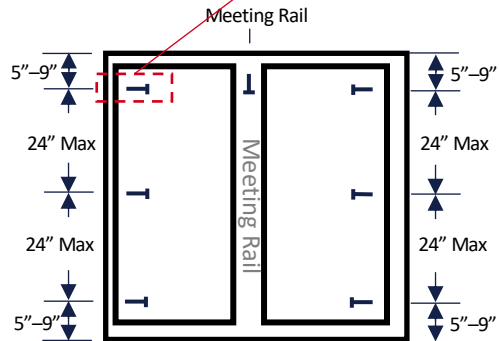
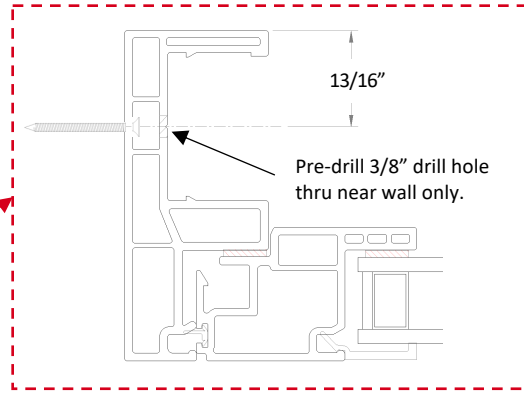
MILGARD



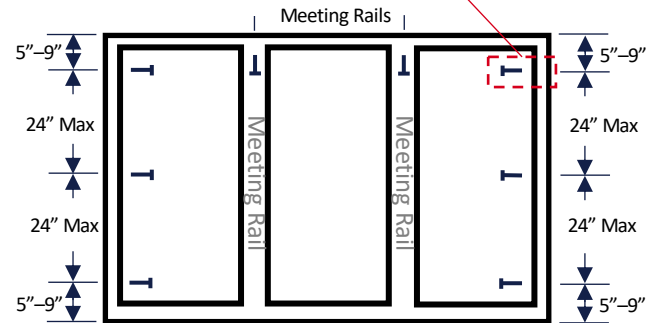
Drive QTY 6X #8-15 x 2"
zinc coated flat head
wood screws at
designated locations
flush with inner wall.

V300/V250 Horizontal Sliders

MILGARD



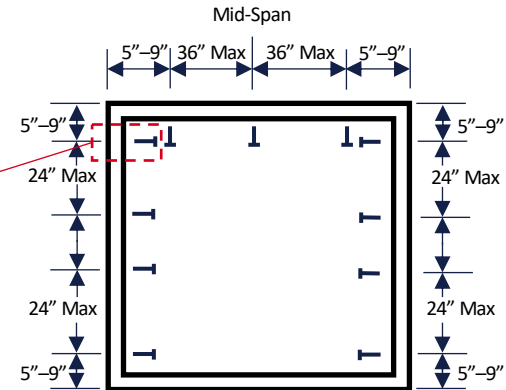
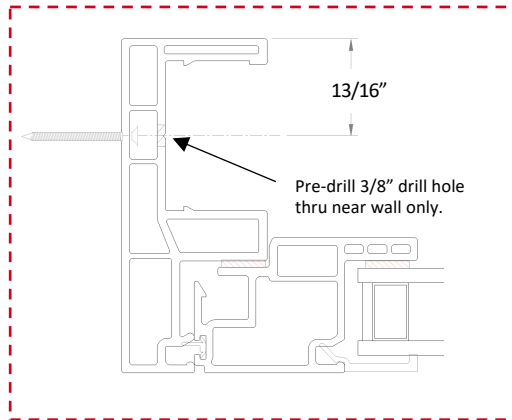
Drive minimum QTY 7X #8-15 x 2" zinc coated flat head wood screws at designated locations flush with inner wall. Add additional fasteners as necessary to meet the spacing criteria.



Drive minimum QTY 8X #8-15 x 2" zinc coated flat head wood screws at designated locations flush with inner wall. Add additional fasteners as necessary to meet the spacing criteria.

V300/V250 Slider Picture Windows

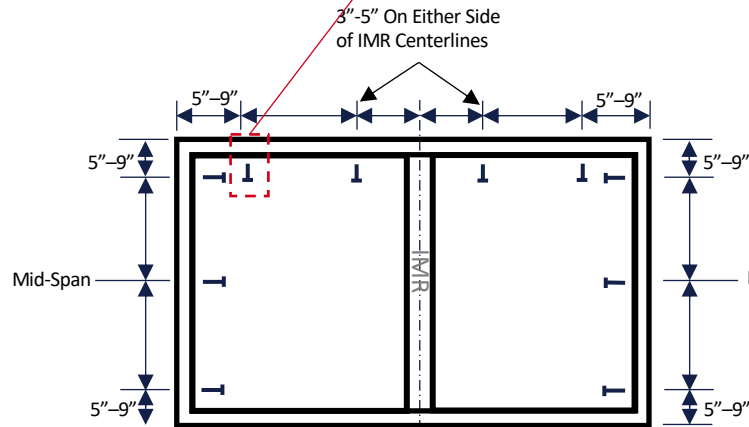
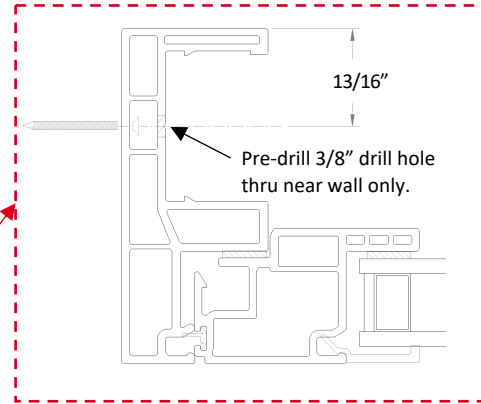
MILGARD



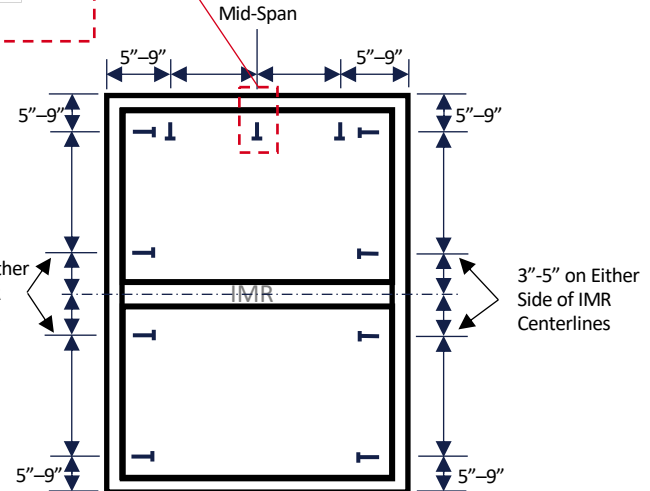
Drive minimum QTY 11X #8-15 x 2" zinc coated flat head wood screws at designated locations flush with inner wall. Add additional fasteners as necessary to meet the spacing criteria.

V300/V250 IMR Combinations with Sliders

MILGARD



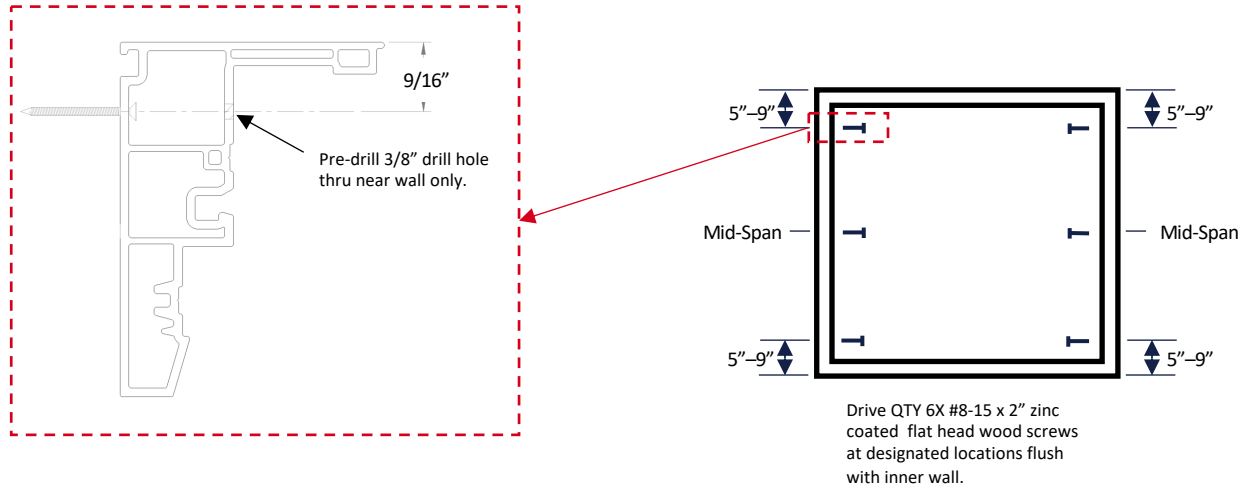
Drive QTY 10X #8-15 x 2" zinc coated flat head wood screws at designated locations flush with inner wall.



Drive QTY 11X #8-15 x 2" zinc coated flat head wood screws at designated locations flush with inner wall.

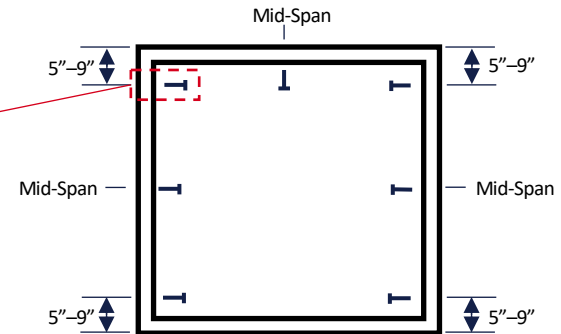
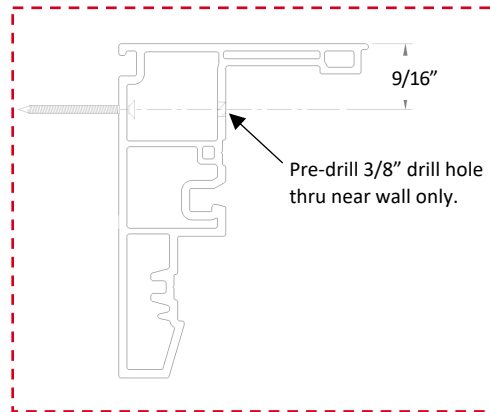
V300/V250 Casements

MILGARD



V300/V250 Awnings

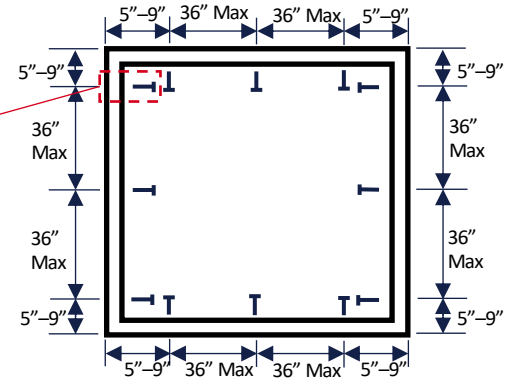
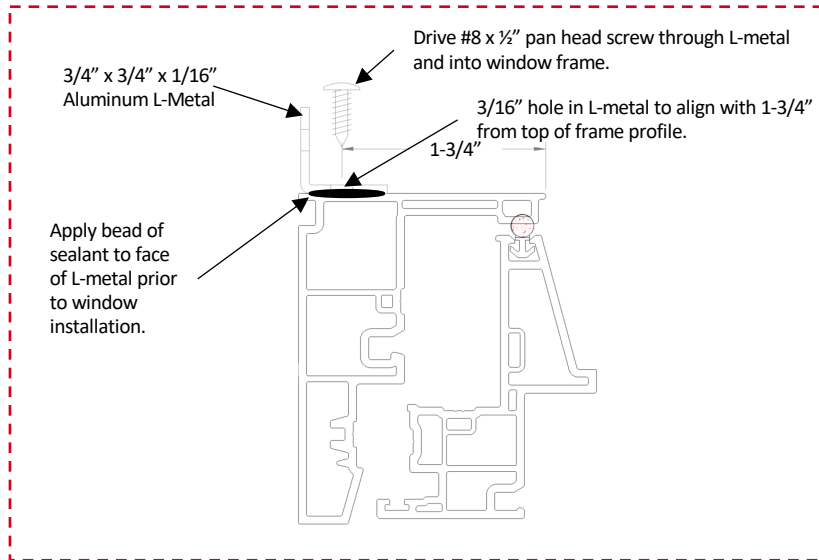
MILGARD



Drive QTY 7X #8-15 x 2" zinc coated flat head wood screws at designated locations flush with inner wall.

V300/V250 Fixed Casement & Awnings

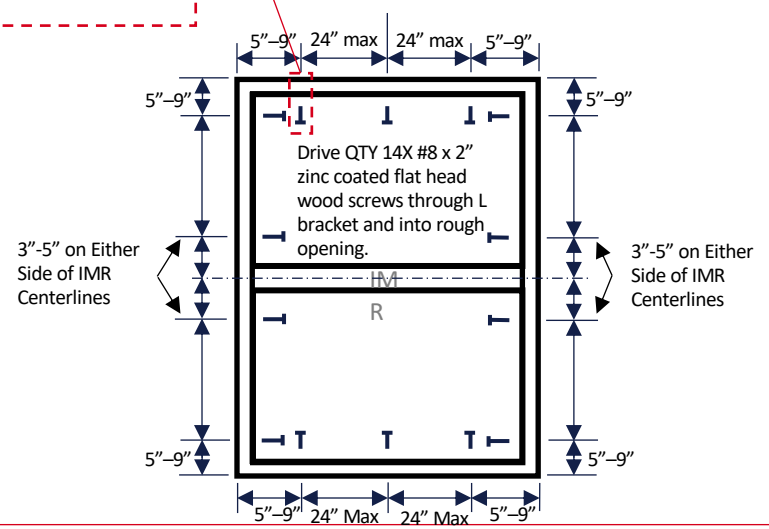
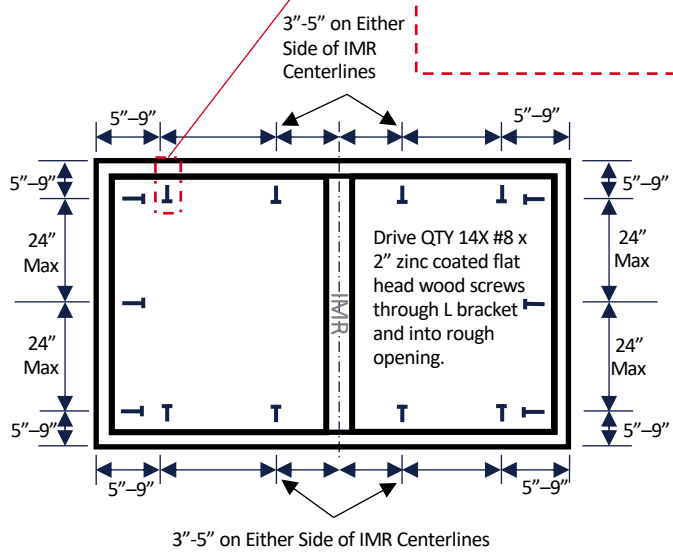
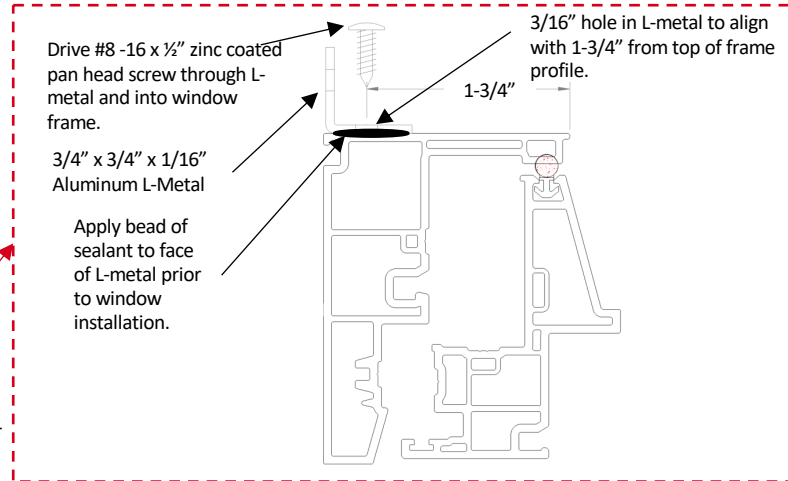
MILGARD



Drive minimum QTY 12X #8-15 x 2" zinc coated flat head wood screws through L bracket and into rough opening. Add additional fasteners as necessary to meet the spacing criteria.

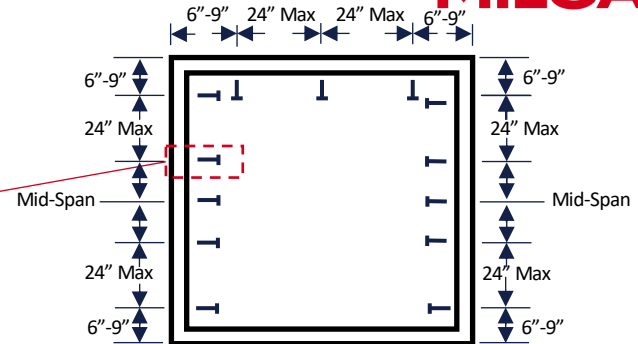
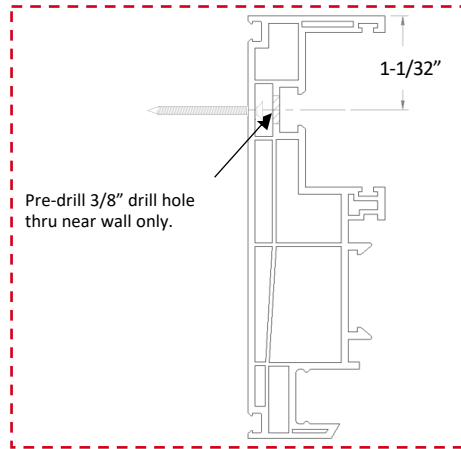
V300/V250 IMR Combinations with Casements & Awnings

MILGARD



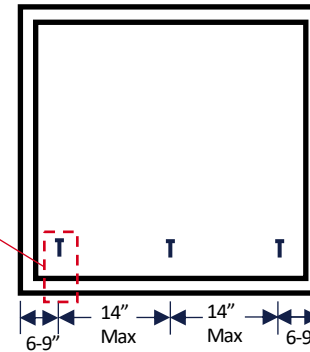
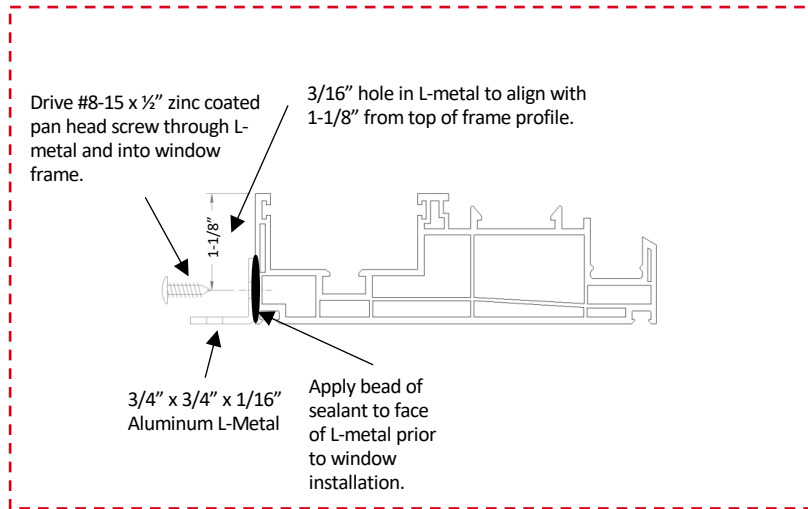
V300 Sliding Glass Doors – Jambs & Head

MILGARD®



Drive minimum QTY 13X #8-15 x 2" zinc coated flat head wood screws at designated locations flush with inner wall. Add additional fasteners as necessary to meet the spacing criteria.

V300 Sliding Glass Doors – Sill



Drive minimum QTY 3X #8-15 x 2" zinc coated flat head wood screws through L bracket and into rough opening. Add additional fasteners as necessary to meet the spacing criteria.

MILGARD®

V400 Fastener Schedule

Appendix:

Page 1: Vertical Sliders

Page 2: Double Hungs

Page 3: Horizontal Sliders

Page 4: Double Sliders

Page 5: Slider Picture Windows

Page 6: IMR Combinations with Sliders

Page 7: Casements

Page 8: Awnings

Page 9: Fixed Casements & Awnings

**Page 10: IMR Combinations with
Casements & Awnings**

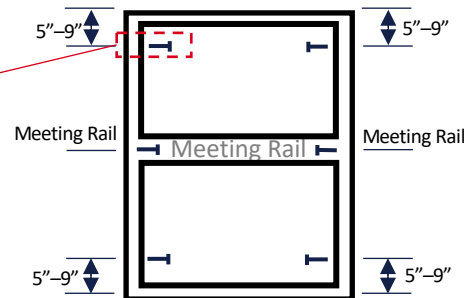
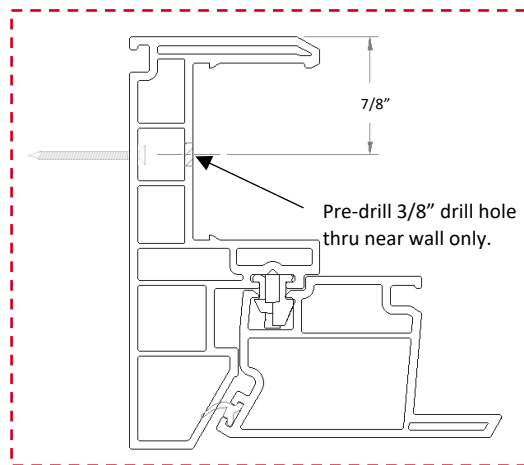
Page 11: Sliding Glass Doors

Page 12: Sliding Glass Doors Canada

Page 13: Outswing & Inswing Doors

V400 Vertical Sliders

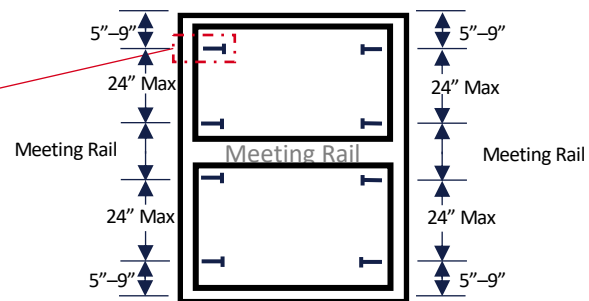
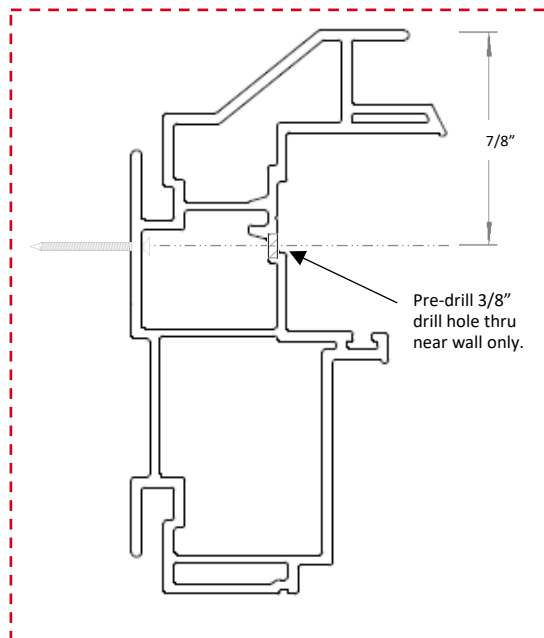
MILGARD



Drive QTY 6X #8-15 x 2"
zinc coated flat head
wood screws at
designated locations
flush with inner wall.

V400 Double Hungs

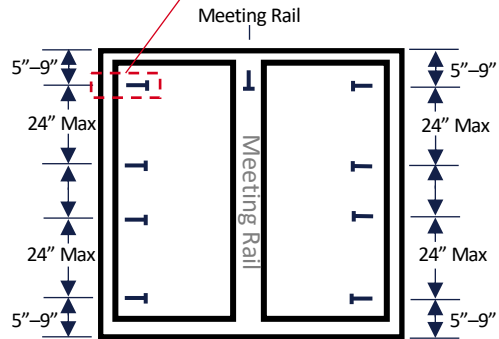
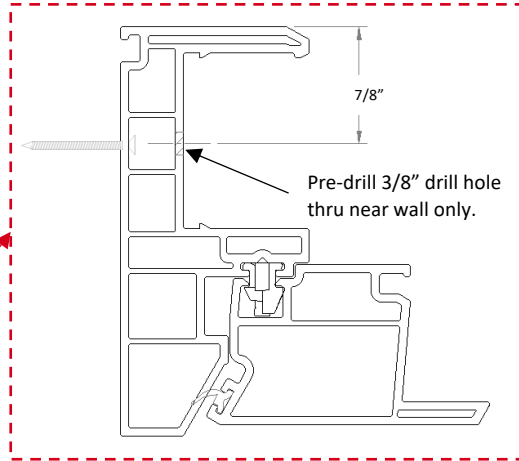
MILGARD



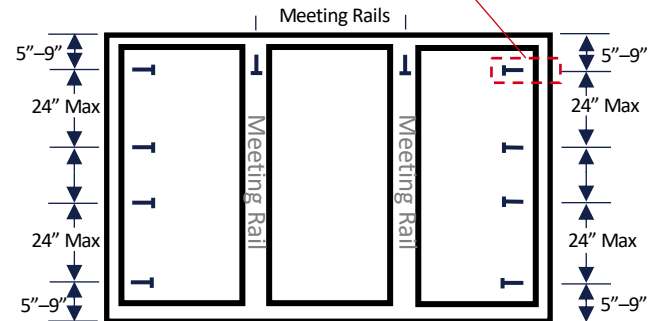
Drive minimum QTY 8X
#8-15 x 2" zinc coated flat
head wood screws at
designated locations flush
with inner wall. Add
additional fasteners as
necessary to meet the
spacing criteria.

V400 Horizontal Sliders

MILGARD



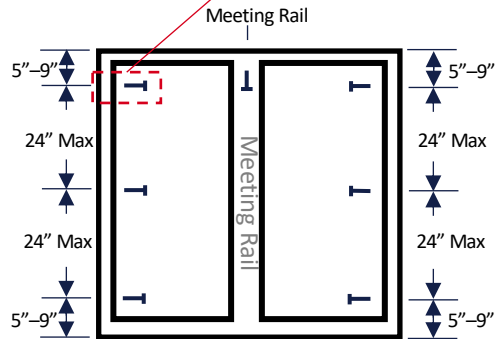
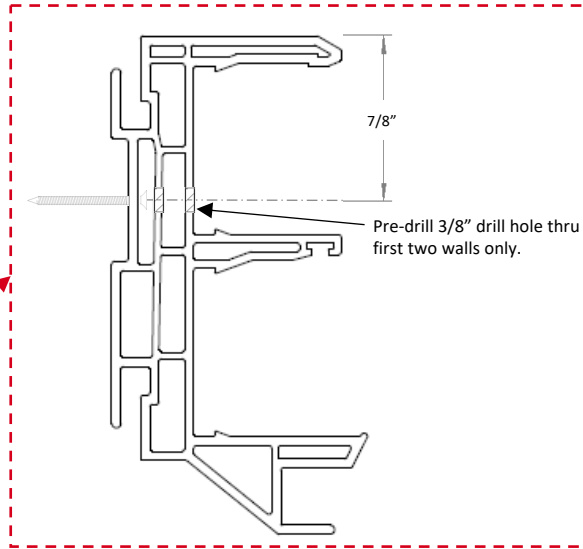
Drive minimum QTY 9X #8-15 x 2" zinc coated flat head wood screws at designated locations flush with inner wall. Add additional fasteners as necessary to meet the spacing criteria.



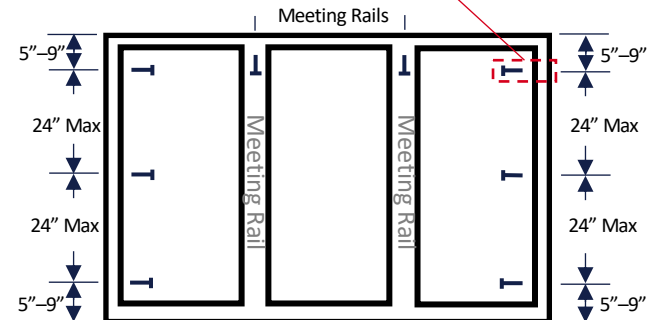
Drive minimum QTY 10X #8-15 x 2" zinc coated flat head wood screws at designated locations flush with inner wall. Add additional fasteners as necessary to meet the spacing criteria.

V400 Double Sliders

MILGARD



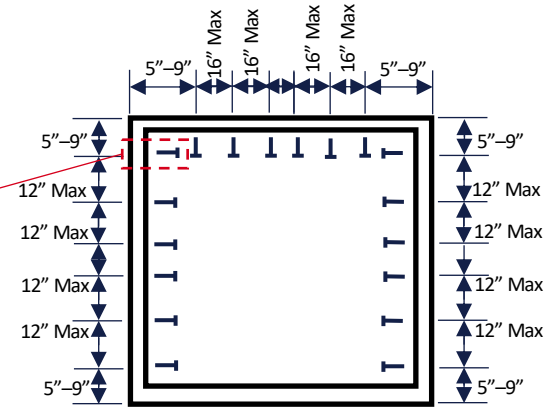
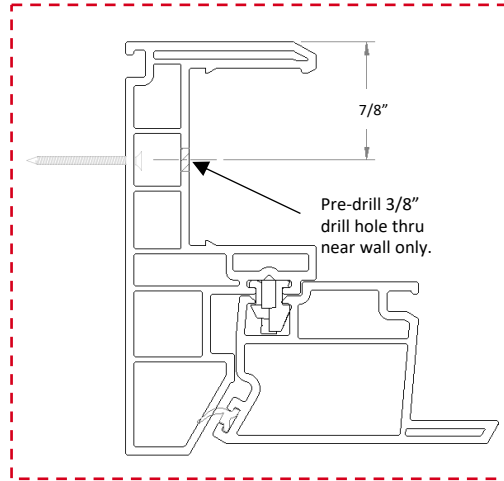
Drive minimum QTY 7X #8-15 x 2" zinc coated flat head wood screws at designated locations flush with inner wall. Add additional fasteners as necessary to meet the spacing criteria.



Drive minimum QTY 9X #8-15 x 2" zinc coated flat head wood screws at designated locations flush with inner wall. Add additional fasteners as necessary to meet the spacing criteria.

V400 Slider Picture Windows

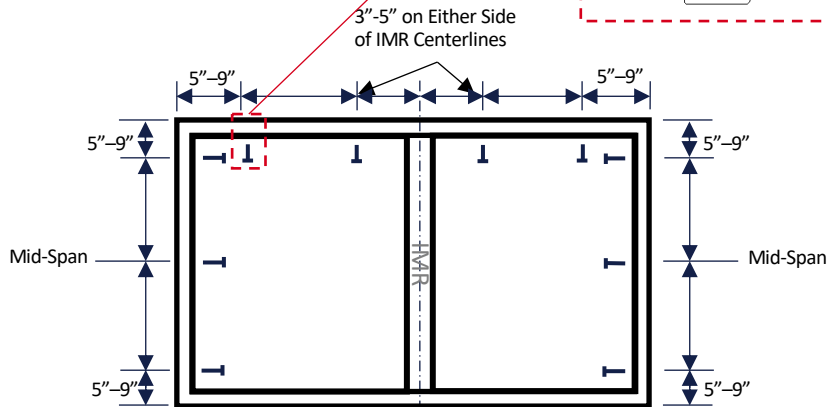
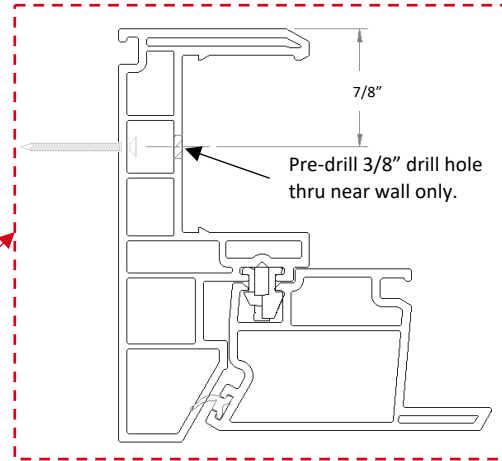
MILGARD



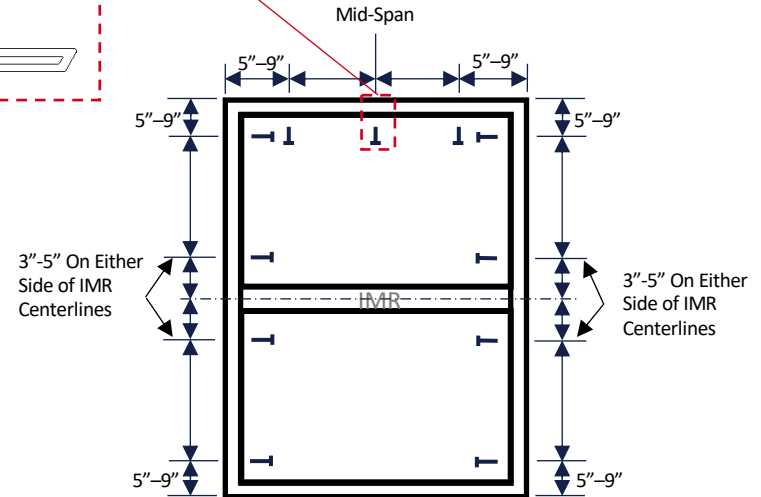
Drive minimum QTY 18X #8-15 x 2" zinc coated flat head wood screws at designated locations flush with inner wall. Add additional fasteners as necessary to meet the spacing criteria.

V400 IMR Combinations with Sliders

MILGARD



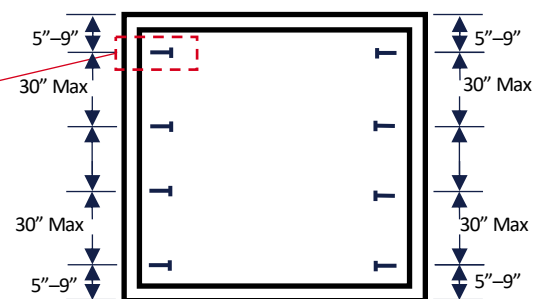
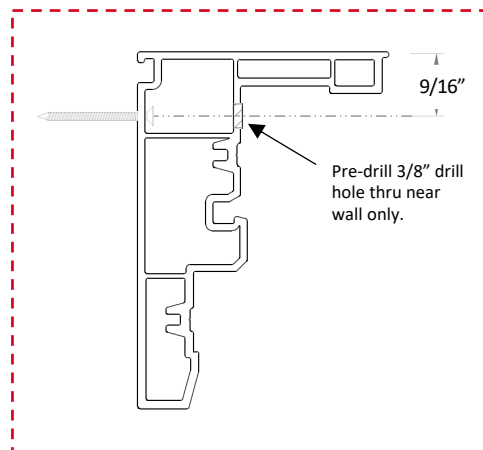
Drive QTY 10X #8-15 x 2" zinc coated flat head wood screws at designated locations flush with inner wall.



Drive QTY 11X #8-15 x 2" zinc coated flat head wood screws at designated locations flush with inner wall.

V400 Casements

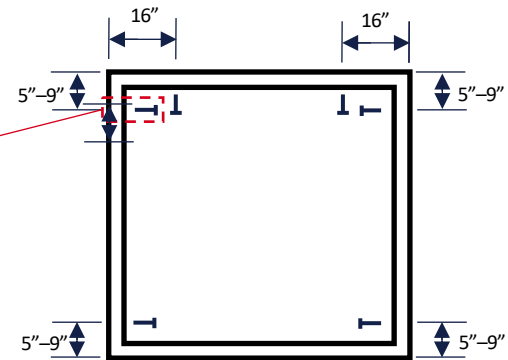
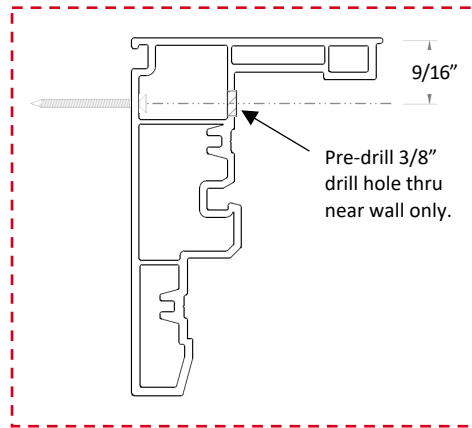
MILGARD



Drive minimum QTY 8X #8-15 x 2" zinc coated flat head wood screws at designated locations flush with inner wall. Add additional fasteners as necessary to meet the spacing criteria.

V400 Awnings

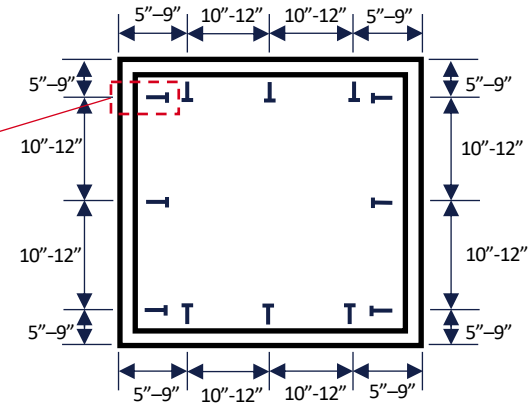
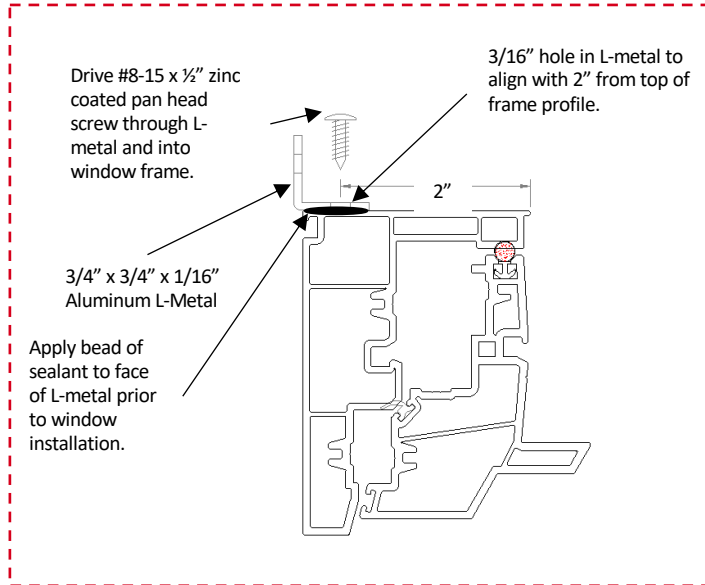
MILGARD



Drive minimum QTY 6X #8-15 x 2\" zinc coated flat head wood screws at designated locations flush with inner wall. Add additional fasteners as necessary to meet the spacing criteria.

V400 Fixed Casements & Awnings

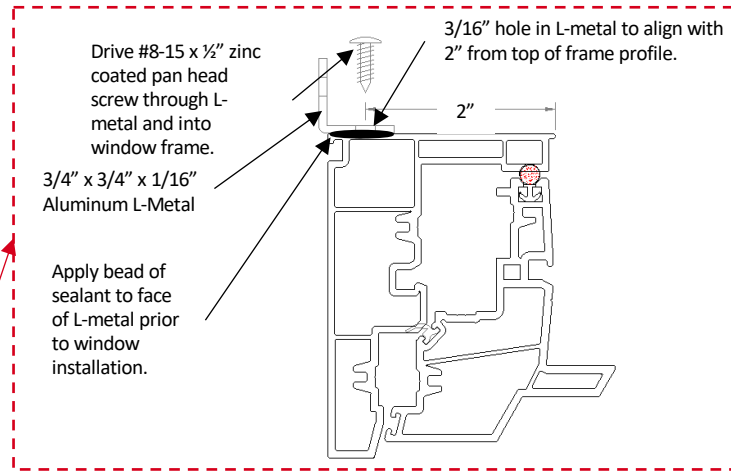
MILGARD



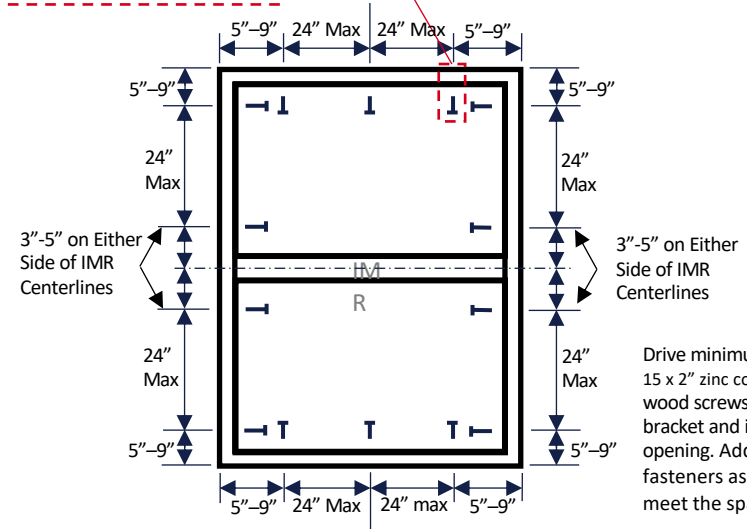
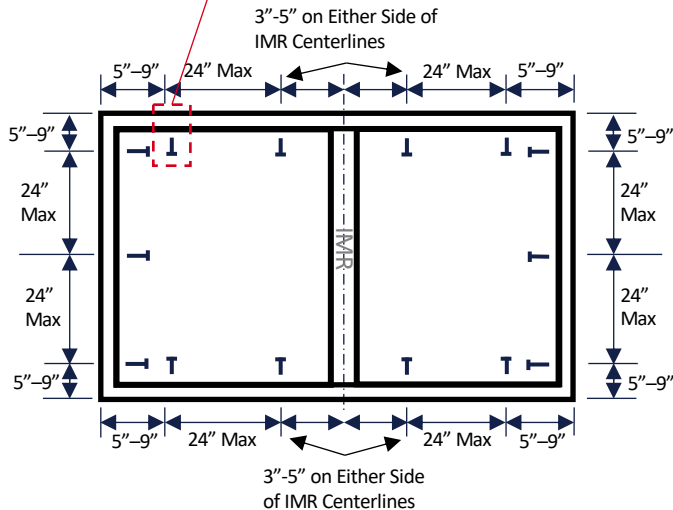
Drive minimum QTY 12X #8-15 x 2" zinc coated flat head wood screws through L bracket and into rough opening. Add additional fasteners as necessary to meet the spacing criteria.

V400 IMR Combinations with Casements & Awnings

MILGARD®



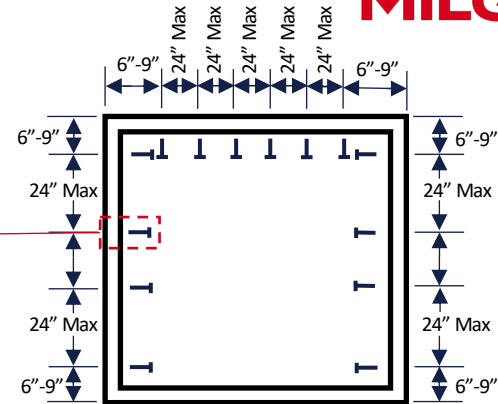
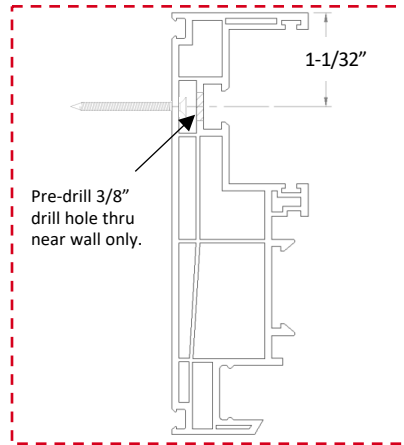
Drive minimum QTY 14X #8-15 x 2" zinc coated flat head wood screws through L bracket and into rough opening. Add additional fasteners as necessary to meet the spacing criteria.



Drive minimum QTY 14X #8-15 x 2" zinc coated flat head wood screws through L bracket and into rough opening. Add additional fasteners as necessary to meet the spacing criteria.

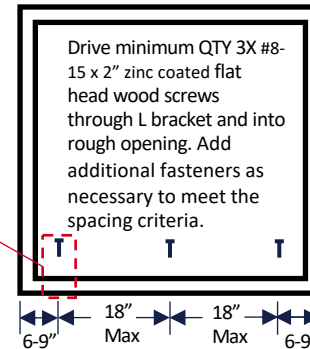
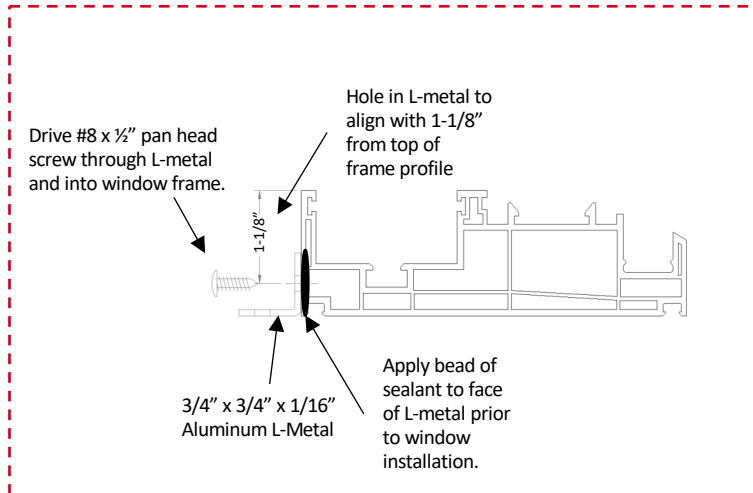
V400 Sliding Glass Doors – Jambs & Head

MILGARD



Drive minimum QTY 14X #8-15 x 2" zinc coated flat head wood screws at designated locations flush with inner wall. Add additional fasteners as necessary to meet the spacing criteria.

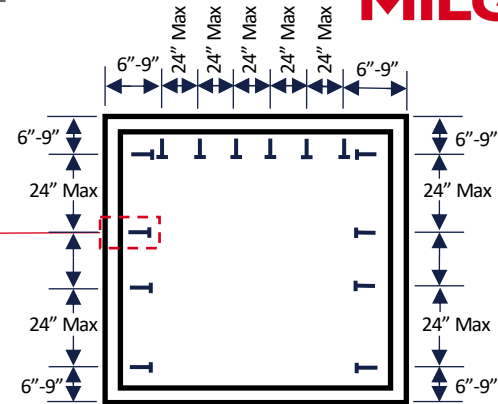
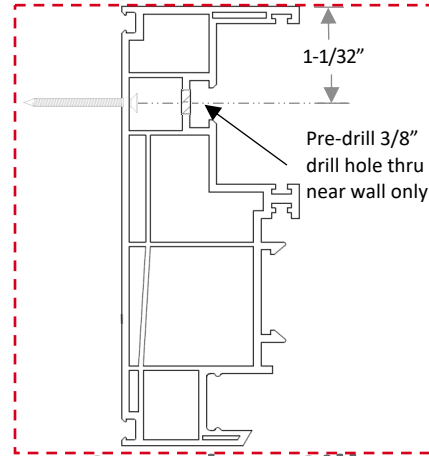
V400 Sliding Glass Doors – Sill



Drive minimum QTY 3X #8-15 x 2" zinc coated flat head wood screws through L bracket and into rough opening. Add additional fasteners as necessary to meet the spacing criteria.

V400 Sliding Glass Doors Canada – Jamb & Head

MILGARD

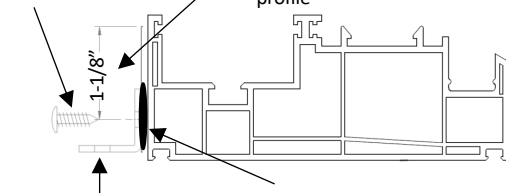


Drive minimum QTY 14X #8-15 x 2" zinc coated flat head wood screws at designated locations flush with inner wall. Add additional fasteners as necessary to meet the spacing criteria.

V400 Sliding Glass Doors Canada – Sill

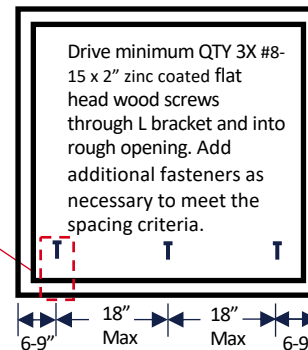
Drive #8 -15x 1/2" zinc coated pan head screw through L-metal and into window frame.

Hole in L-metal to align with 1-1/8" from top of frame profile



3/4" x 3/4" x 1/16" Aluminum L-Metal

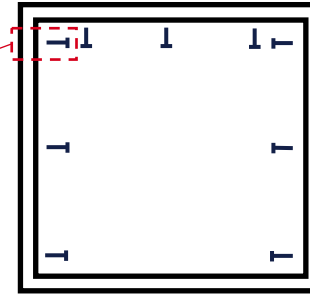
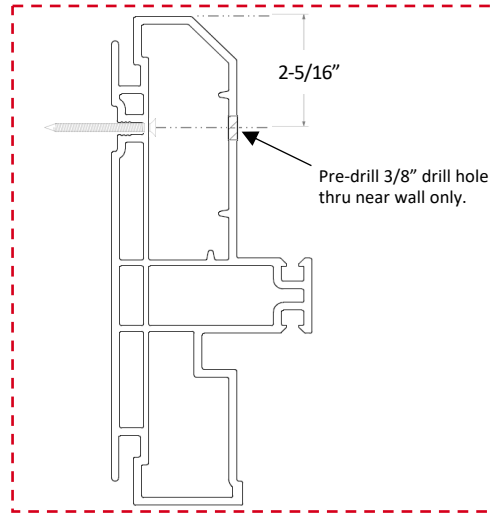
Apply bead of sealant to face of L-metal prior to window installation.



Drive minimum QTY 3X #8-15 x 2" zinc coated flat head wood screws through L bracket and into rough opening. Add additional fasteners as necessary to meet the spacing criteria.

V400 Inswing & Outswing– Jambs & Head

MILGARD



Product arrives with pre-drilled holes in covers & caps for fasteners; Drive QTY 9X #8-15 x 2" zinc coated flat head wood screws at pre-drilled locations flush with inner wall. Then cover clearance hole with cap.

MILGARD®

C650 Fastener Schedule

Appendix:

Page 1: Vertical Sliders

Page 2: Horizontal Sliders

Page 3: Slider Picture Windows

Page 4: Mull Combinations with Sliders

Page 5: Casements

Page 6: Awnings

Page 7: Fixed Casements & Awnings

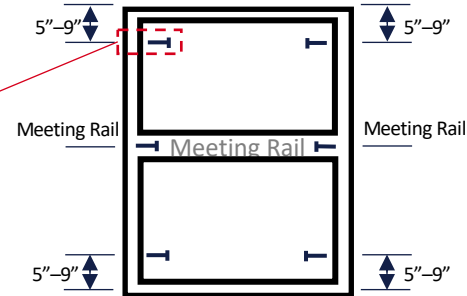
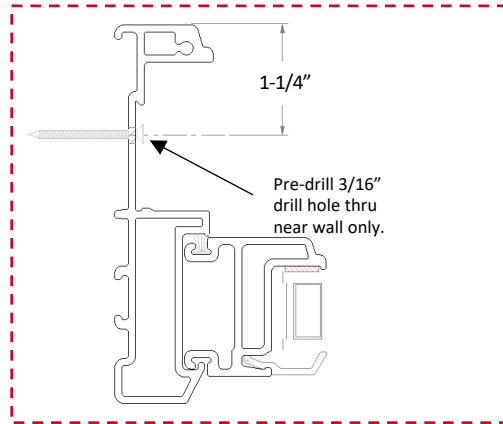
Page 8: Sliding Glass Doors

Page 9: Outswing Doors

Page 10: Inswing Doors

C650 Vertical Sliders

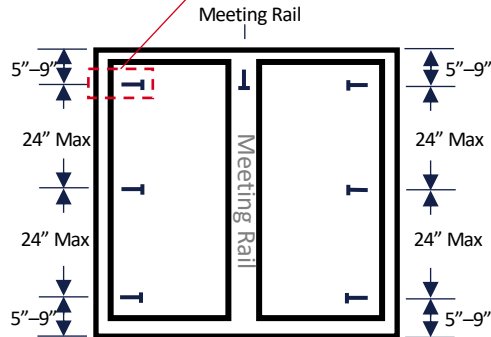
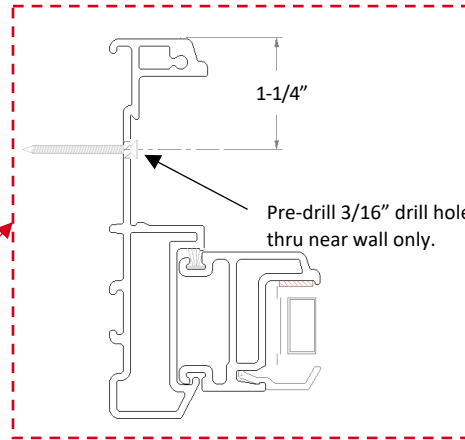
MILGARD



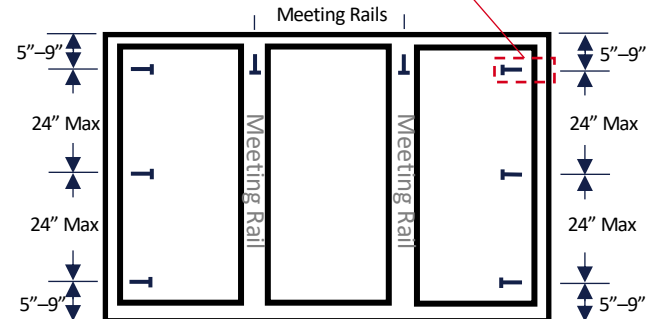
Drive QTY 6X #8-15 x 2" zinc coated flat head wood screws at designated locations flush with inner wall.

C650 Horizontal Sliders

MILGARD



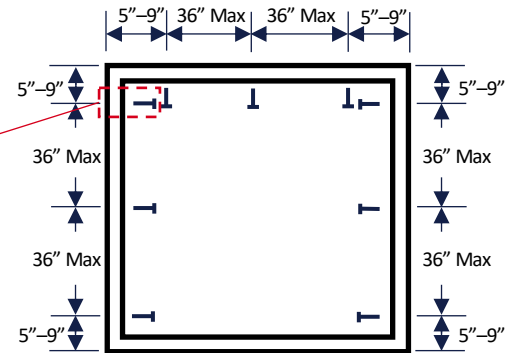
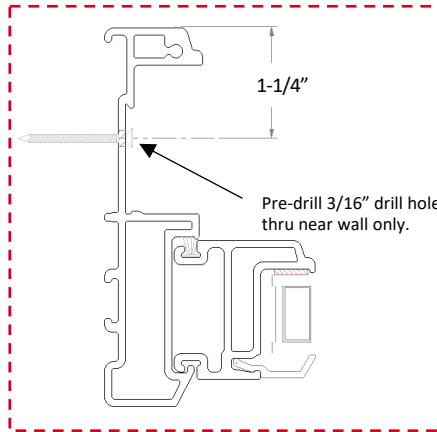
Drive minimum QTY 7X #8-15 x 2" zinc coated flat head wood screws at designated locations flush with inner wall. Add additional fasteners as necessary to meet the spacing criteria.



Drive minimum QTY 8X #8-15 x 2" zinc coated flat head wood screws at designated locations flush with inner wall. Add additional fasteners as necessary to meet the spacing criteria.

C650 Slider Picture Windows

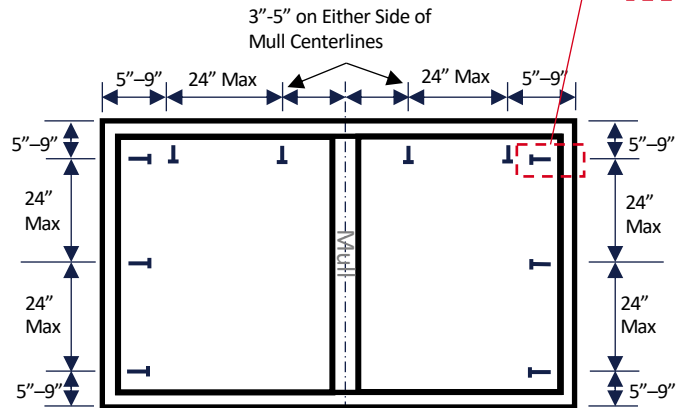
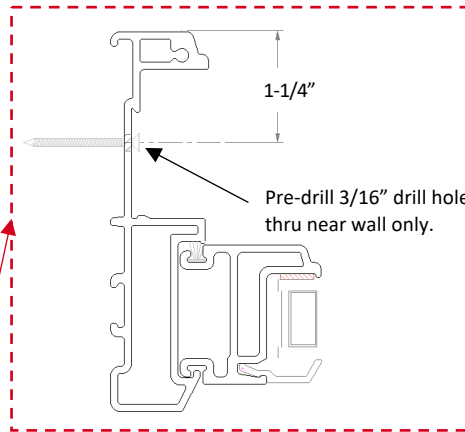
MILGARD



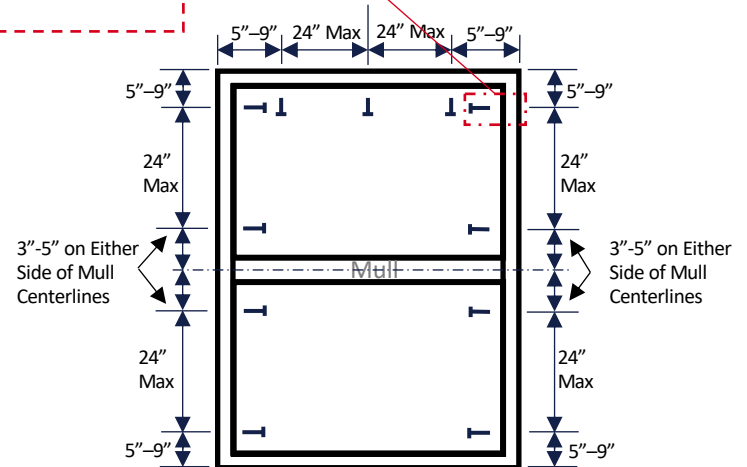
Drive minimum QTY 9X #8-15 x 2" zinc coated flat head wood screws at designated locations flush with inner wall. Add additional fasteners as necessary to meet the spacing criteria.

C650 Mull Combination with Sliders

MILGARD



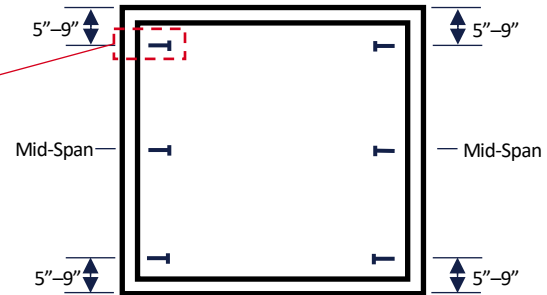
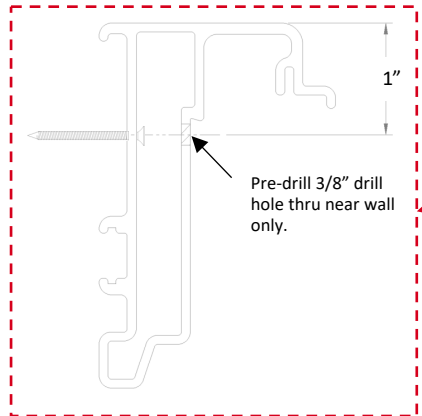
Drive minimum QTY 10X #8-15 x 2" zinc coated flat head wood screws at designated locations flush with inner wall. Add additional fasteners as necessary to meet the spacing criteria.



Drive minimum QTY 11X #8-15 x 2" zinc coated flat head wood screws at designated locations flush with inner wall. Add additional fasteners as necessary to meet the spacing criteria.

C650 Casements

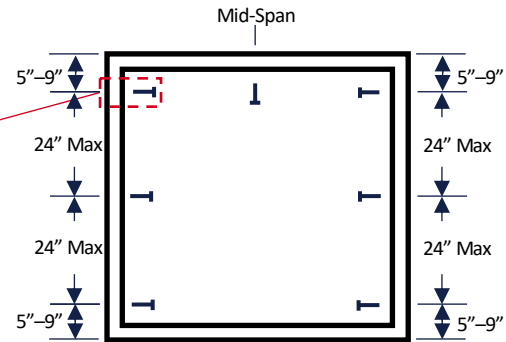
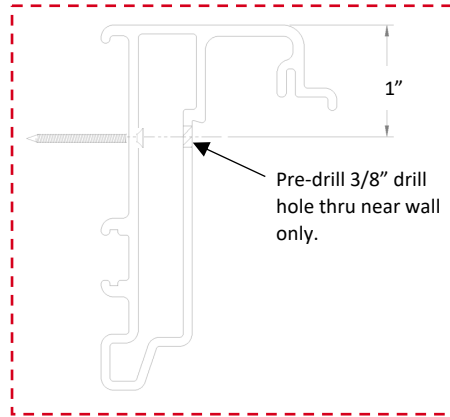
MILGARD



Drive QTY 6X #8-15 x 2" zinc coated flat head wood screws at designated locations flush with inner wall.

C650 Awnings

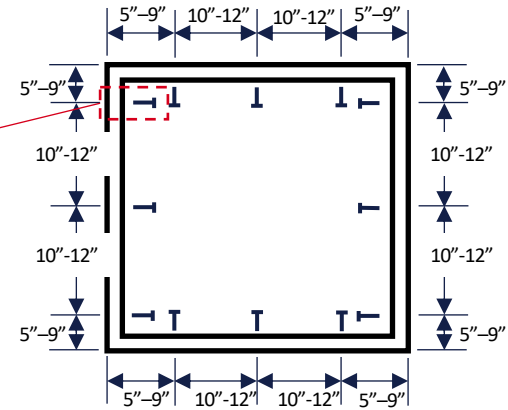
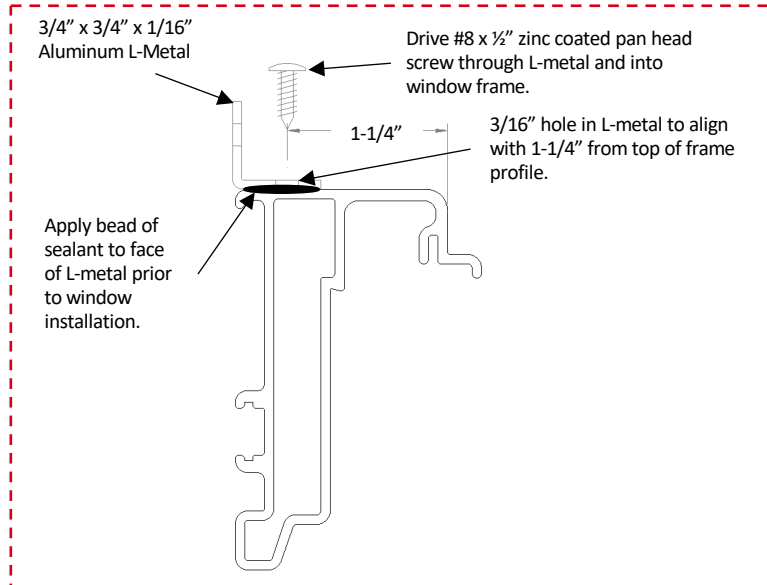
MILGARD



Drive minimum QTY 7X #8-15 x 2" zinc coated flat head wood screws at designated locations flush with inner wall. Add additional fasteners as necessary to meet the spacing criteria.

C650 Fixed Casements & Awnings

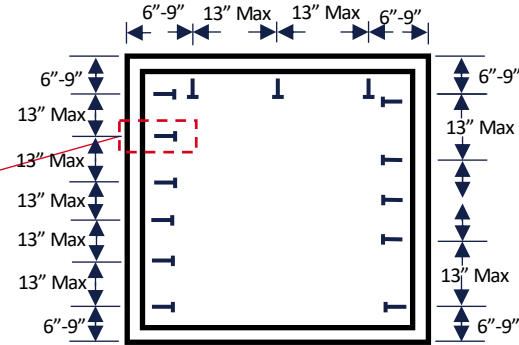
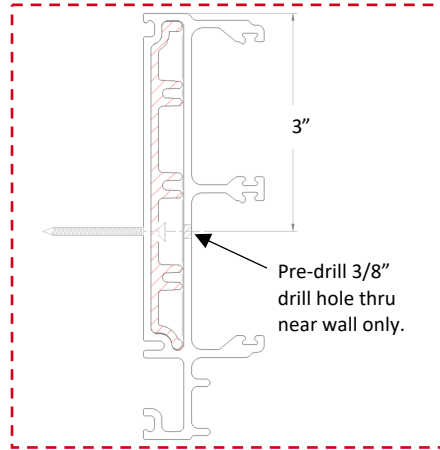
MILGARD



Drive minimum QTY 12X #8-15 x 2" zinc coated flat head wood screws through L bracket and into rough opening. Add additional fasteners as necessary to meet the spacing criteria.

C650 Sliding Glass Doors – Jambs & Head

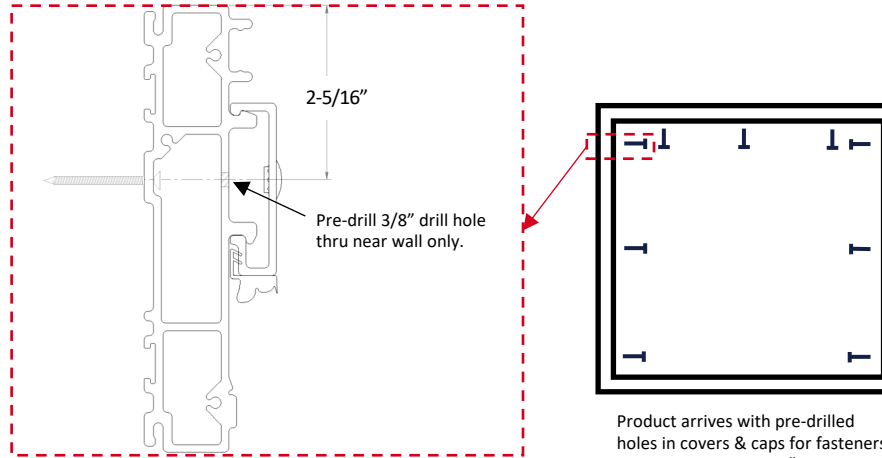
MILGARD



Drive minimum QTY 14X #8-15 x 2" zinc coated flat head wood screws at designated locations flush with inner wall. Add additional fasteners as necessary to meet the spacing criteria.

C650 Outswing Doors – Jambs & Head

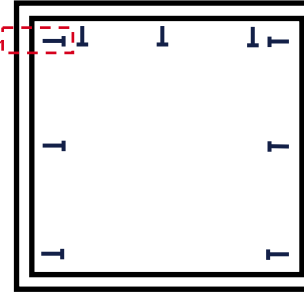
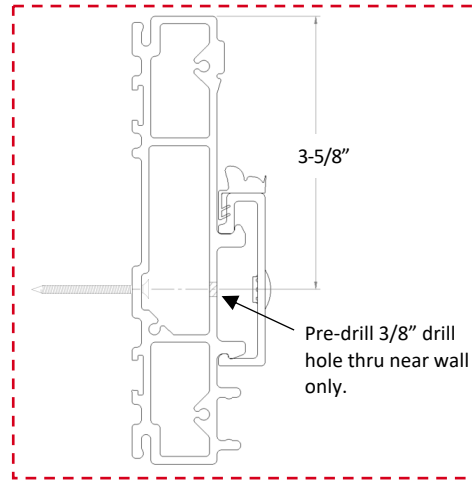
MILGARD



Product arrives with pre-drilled holes in covers & caps for fasteners; Drive QTY 9X #8-15 x 2" zinc coated flat head wood screws at pre-drilled locations flush with inner wall. Then cover clearance hole with cap.

C650 Inswing Doors – Jambs & Head

MILGARD



Product arrives with pre-drilled holes in covers & caps for fasteners;
Drive QTY 9X #8-15 x 2" zinc coated flat head wood screws at pre-drilled locations flush with inner wall. Then cover clearance hole with cap.

MILGARD®

A250 Fastener Schedule

Appendix:

Page 1: Vertical Sliders

Page 2: Horizontal Sliders

Page 3: Slider Picture Windows

Page 4: Casements

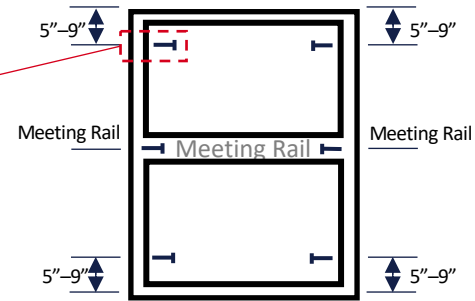
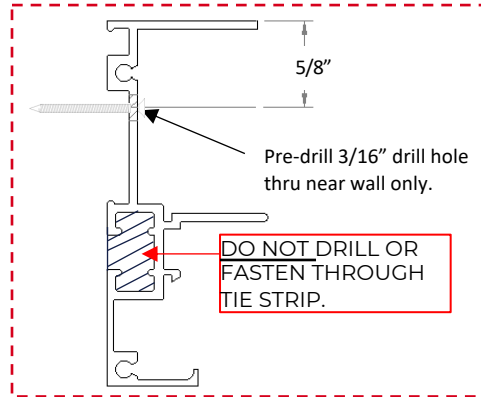
Page 5: Awnings

Page 6: IMR Combinations

Page 7: Sliding Glass Doors

A250 Vertical Sliders

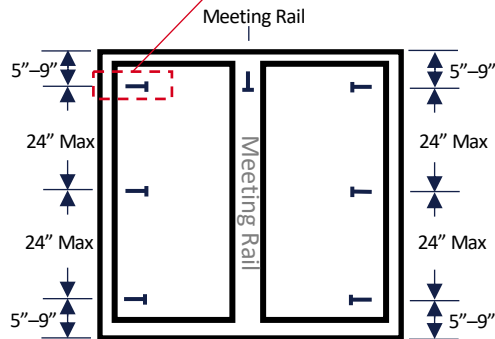
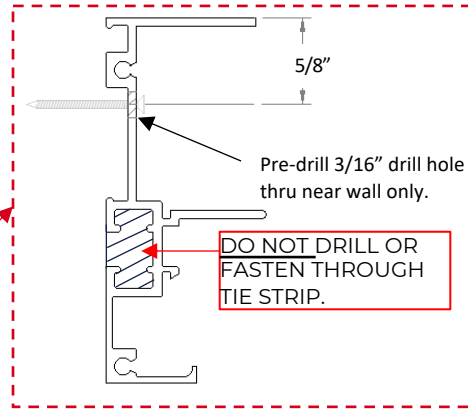
MILGARD



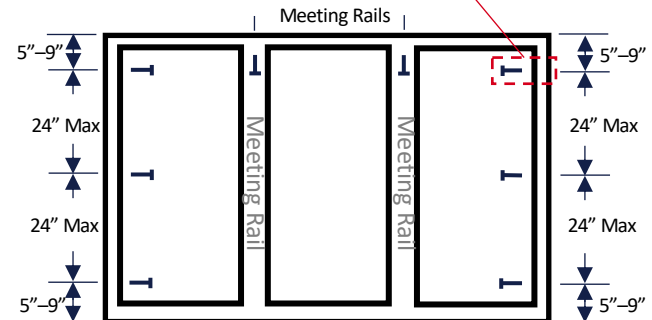
Drive QTY 6X #8-15 x 2" zinc coated flat head wood screws at designated locations flush with inner wall.

A250 Horizontal Sliders

MILGARD



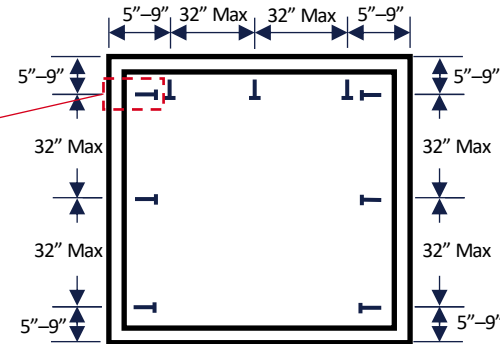
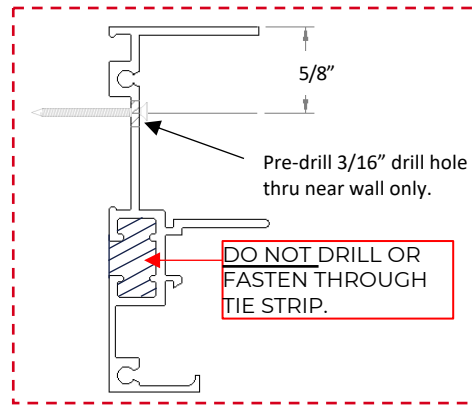
Drive minimum QTY 7X #8-15 x 2" zinc coated flat head wood screws at designated locations flush with inner wall. Add additional fasteners as necessary to meet the spacing criteria.



Drive minimum QTY 8X #8-15 x 2" zinc coated flat head wood screws at designated locations flush with inner wall. Add additional fasteners as necessary to meet the spacing criteria.

A250 Slider Picture Windows

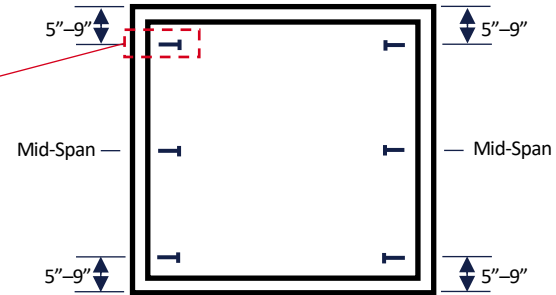
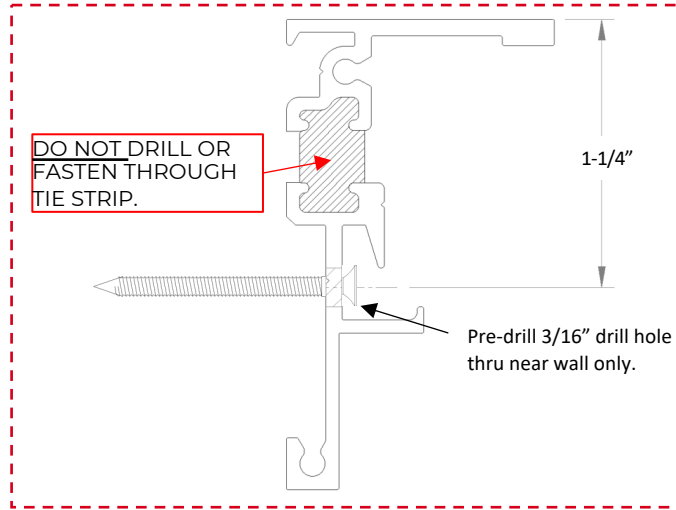
MILGARD



Drive minimum QTY 9X #8-15 x 2" zinc coated flat head wood screws at designated locations flush with inner wall. Add additional fasteners as necessary to meet the spacing criteria.

A250 Casements

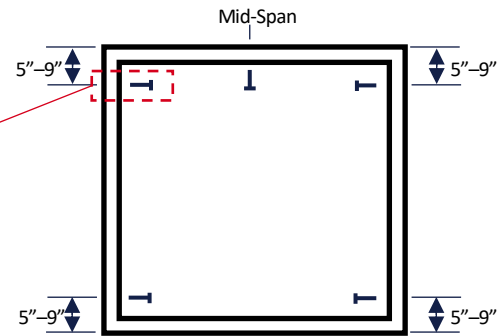
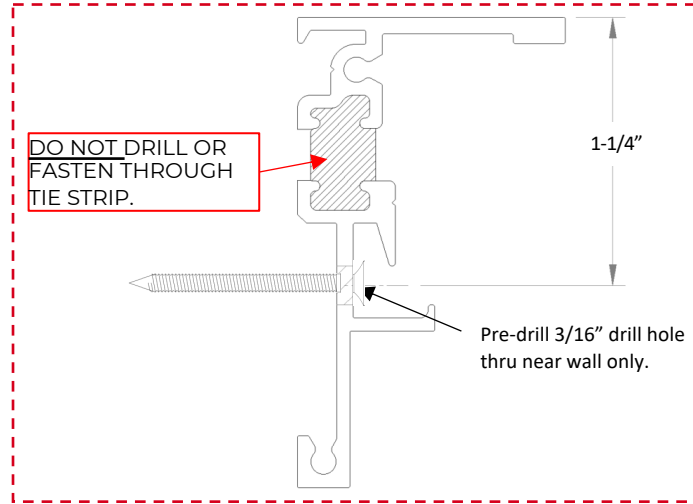
MILGARD



Drive QTY 6X #8-15 x 2" zinc coated flat head wood screws at designated locations flush with inner wall.

A250 Awnings

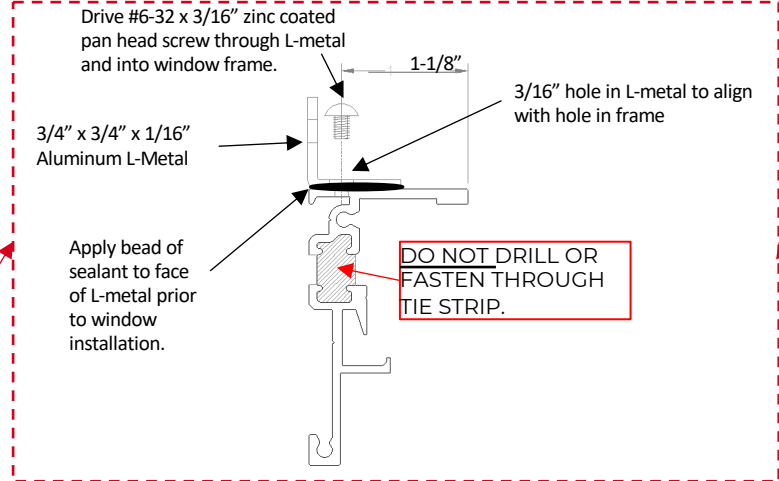
MILGARD



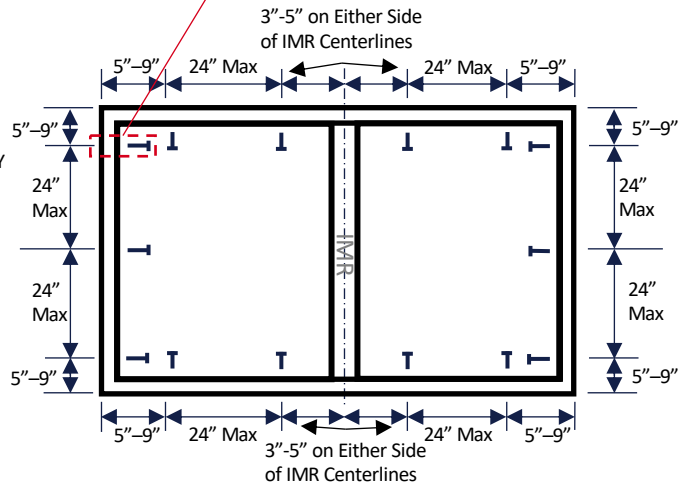
Drive QTY 5X #8-15 x 2" zinc coated flat head wood screws at designated locations flush with inner wall.

A250 IMR Combinations

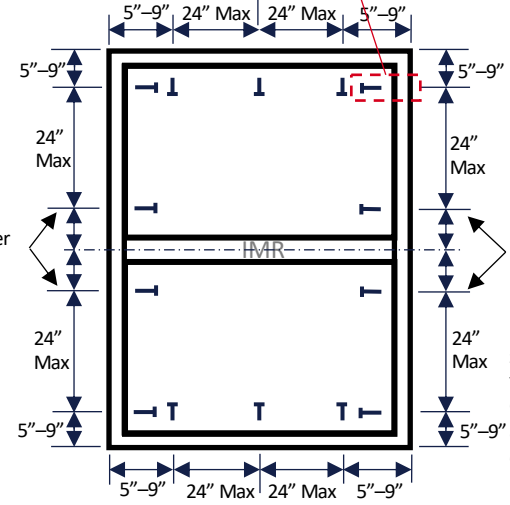
MILGARD



Drive minimum QTY 14X #8-15 x 2" zinc coated" flat head wood screws through L bracket and into rough opening. Add additional fasteners as necessary to meet the spacing criteria.

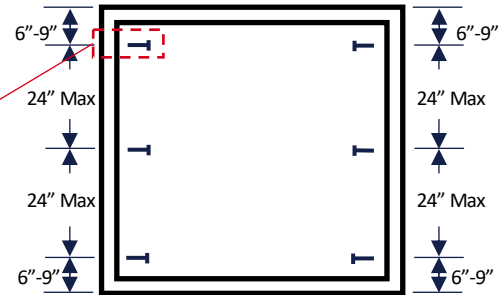
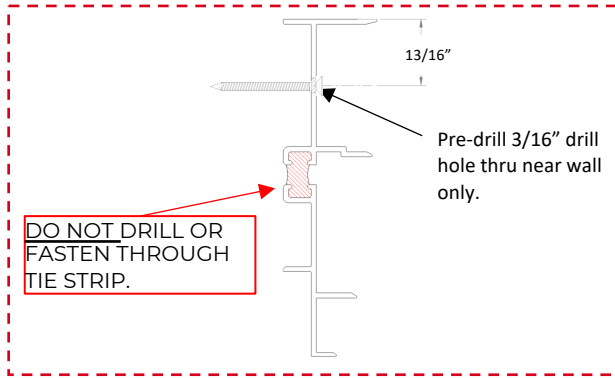


3"-5" on Either Side of IMR Centerlines



Drive minimum QTY 14X #8-15 x 2" zinc coated flat head wood screws through L bracket and into rough opening. Add additional fasteners as necessary to meet the spacing criteria.

A250 Sliding Glass Doors - Jambs

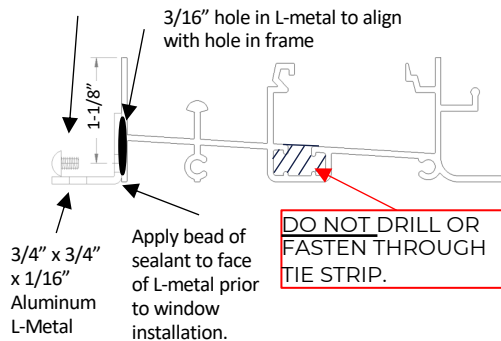


Drive minimum QTY 6X #8-15 x 2" zinc coated flat head wood screws at designated locations flush with inner wall. Add additional fasteners as necessary to meet the spacing criteria.

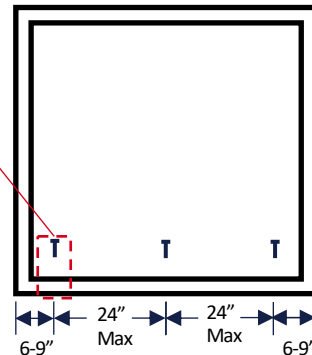
MILGARD.

A250 Sliding Glass Doors - Sill

Drive #6-32 x 3/16" zinc coated pan head screw through L-metal and into window frame.



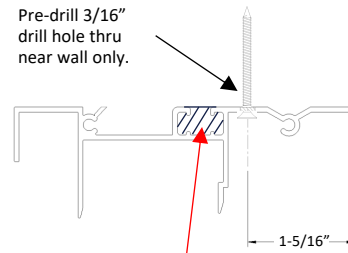
Drive minimum QTY 3X #8-15 x 2" zinc coated flat head wood screws through L bracket and into rough opening. Add additional fasteners as necessary to meet the spacing criteria.



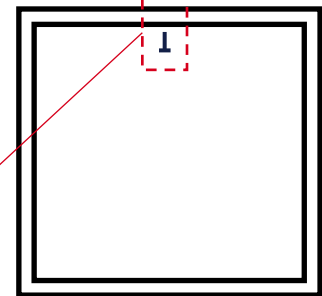
A250 Sliding Glass Doors - Head

Pre-drill 3/16" drill hole thru near wall only.

DO NOT DRILL OR FASTEN THROUGH TIE STRIP.



Meeting Rails



Drive QTY 1X #8-15 x 2" zinc coated flat head wood screws at designated locations flush with inner wall.